

Access from the Airport

The closest airport is Seattle-Tacoma International Airport (SEA). Taxis (~\$50) or ride-sharing services (e.g. Uber/Lyft ~\$25) are available, but we suggest using public transportation to get to the conference hotel unless you are arriving late in the evening or have bulky luggage. A rental car is not recommended due to the potentially heavy traffic near downtown.

Public Transportation Directions:

Trains run every 15 minutes or less from roughly 5 AM to midnight. From Westlake Station, you can take a short walk to the hotel (about 2 short city blocks, 3 minutes).

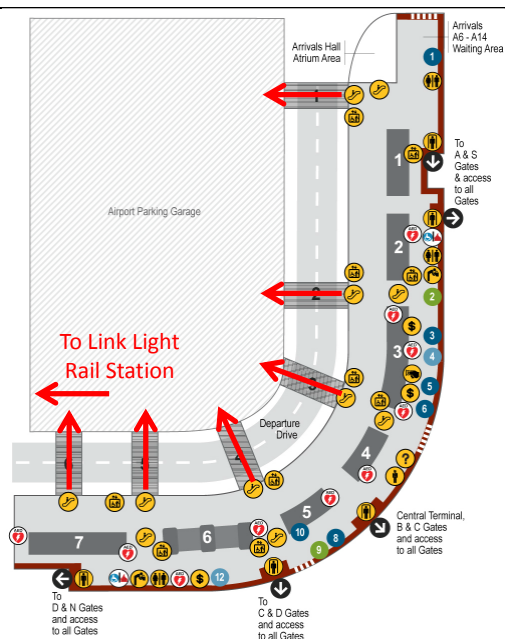
Link to directions - <https://binged.it/2j6ib5e>

1) Getting to the link light rail station

Depending upon where you are arriving from, when you exit the secured gate area you might find yourself in either a) the baggage claim area on the lower level or b) near the ticketing counters on the main level. If you are in baggage claim, head upstairs to the main level.

Once on the main level, follow the signs towards the “Link Light Rail”. There are a number of escalators heading up on the main level. These lead to one of 6 skybridges that cross the main departures dropoff driveway.

Once on the other side of the skybridge, you will find yourself in the parking garage. Turn left and follow the walkway to the link light rail station.



2) Getting to Westlake Station

Before you board the train, purchase a ticket from one of these machines. The fare is \$3.00 and credit cards or cash are accepted. Select “Downtown Seattle -> Westlake”.

Ticket in hand, head upstairs to board the train.

Westlake station is approximately 35 minutes away from the airport.



3) Arriving at Westlake Station

When you exit the train, turn right and head up the escalators towards the "3rd Avenue & Pine St" exit.

Once at the top of the escalators, bear right and exit the train station.

If you exited the correct door of the train station, you will be on the north side of Pine Street (next to a Nordstrom and across the street from an Old Navy). Turn left to head east.



4) Getting to the hotel

The Grand Hyatt is 2 blocks east of the Westlake Station stop on the south side of Pine Street. The address is 721 Pine Street Seattle, WA 98101.

